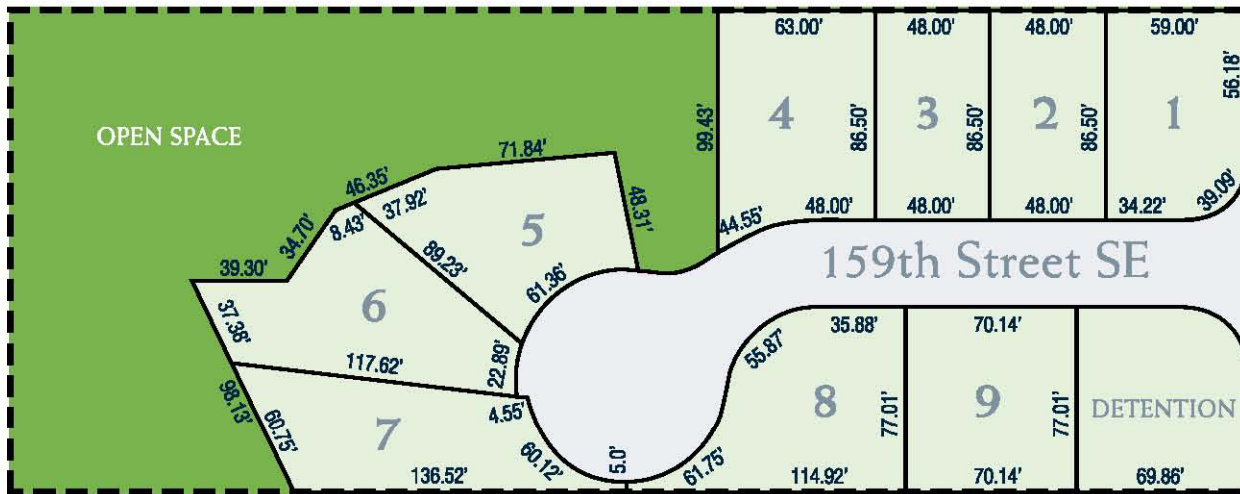


# Old Hurting PLACE

15910 3RD AVENUE SE  
BOTHELL, WASHINGTON



3rd Avenue SE



- 9 lots - unincorporated Snohomish County
- Recording January 2008
- Easy I-5 Access
- Edmonds School District
- Make Offer \$

For Additional Information:  
USASIA Pacific, Inc.

**Michael Lai**  
206.838.5990  
Michaellai@usasiapacific.com



Windermere Real Estate / RNT